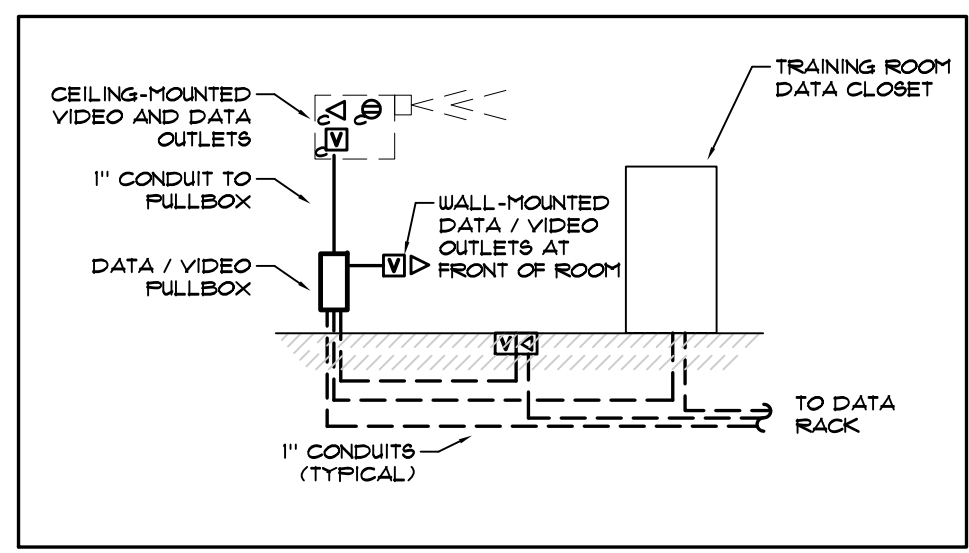


SHEET NOTES

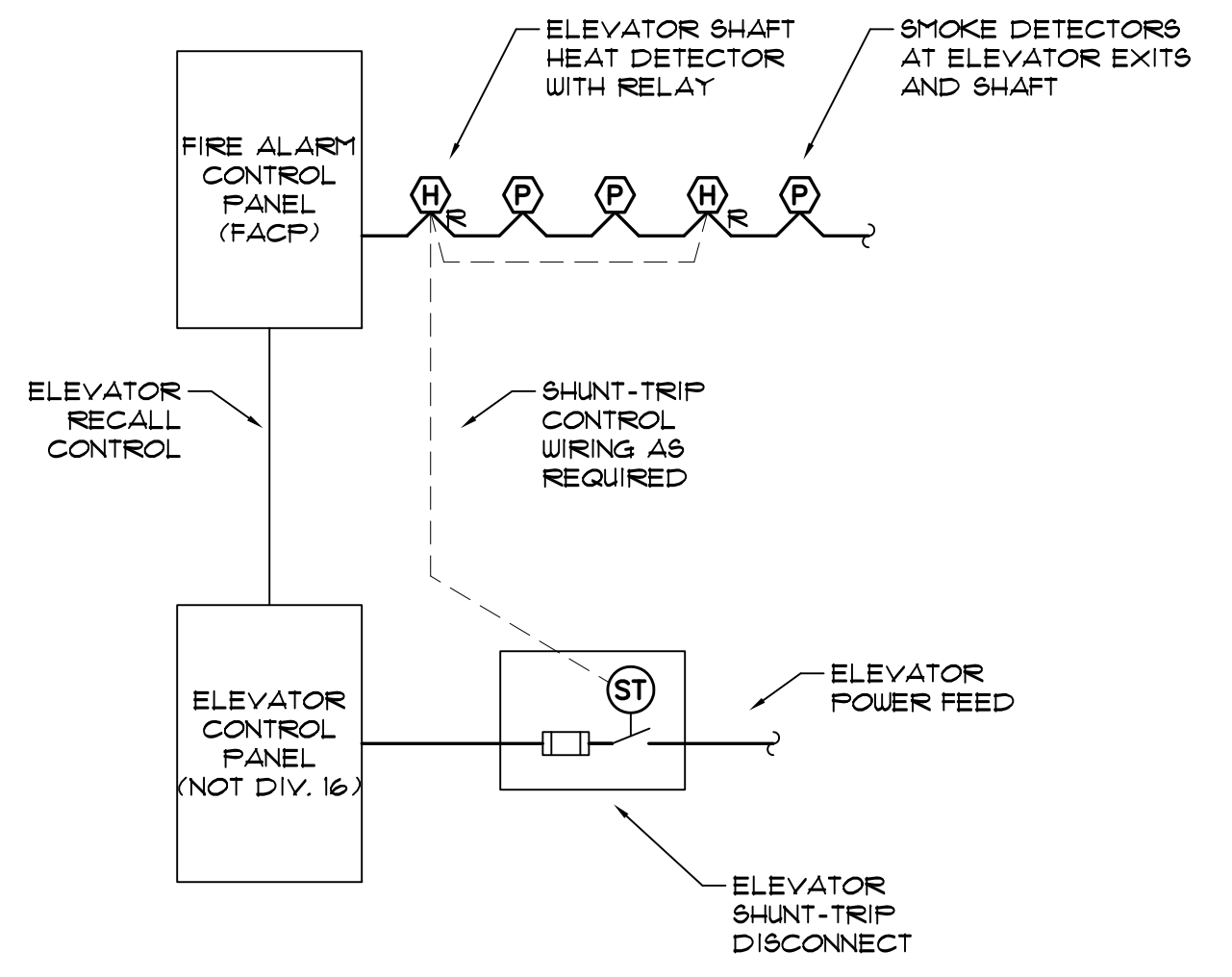
1. ALL TELEPHONE / DATA AND COAX CABLE TO BE ROUTED TO THE DATA RACK IN STORAGE 114 UNLESS NOTED OTHERWISE BY KEYED NOTE 9.

KEYED NOTES

1. PROVIDE VIDEO / DATA WALL FULLBOX WITH HINGED LID. PROVIDE CONDUITS AND CONDUCTORS UP TO PROJECTOR LOCATION, OVER TO VIDEO CABINET, UNDER FLOOR TO FLOORBOX AND TO DATA RACK IN STORAGE ROOM 114. (SEE VIDEO / DATA DETAIL 6/E3.1)
2. POWER CORD REELS.
 - 20-AMP: PROVIDE (3) MINIMUM 50-FOOT POWER CORD REELS. DANIEL WOODHEAD 20-AMP INDUSTRIAL DUTY 32533N OR APPROVED EQUAL.
 - 30-AMP: PROVIDE (2) MINIMUM 50-FOOT POWER CORD REELS. DANIEL WOODHEAD 35-AMP INDUSTRIAL DUTY 32535M OR APPROVED EQUAL.
3. GAS SOLENOID FOR BARBEQUE AND DUAL-FUEL KITCHEN RANGE. SOLENOID LOCATED IN ACCESSIBLE CEILING SPACE. CONNECT TO TAP-OUT SYSTEM.
4. RECEPTACLE AND TELEVISION OUTLET IN CEILING FOR TELEVISIONS. COORDINATE LOCATION WITH ARCHITECT. ROUTE CABLE TO AV CLOSET WITH HOMERUN TO STORAGE ROOM. SEE DIVISION 10 SPECIFICATIONS.
5. POWER AND DATA INSTALLED IN SIDE OF WORK COUNTER. COORDINATE WITH CASEWORK PROVIDER. MOUNT COPIER SIDE AT 48" AFF AND OPPOSITE SIDE ABOUT 1" BELOW COUNTER TOP EDGE.
6. POWER FOR CONTROLLED MAG LOCK. SEE DOOR HARDWARE SCHEDULE FOR ADDITIONAL REQUIREMENTS. CONNECT TO TAP-OUT SYSTEM AND ENERGIZE UPON TAP-OUT.
7. MAG DOOR HOLD-OPEN. CONNECT TO PANEL 'H2' VIA TAP-OUT CONTROLLER. DOORS TO RELEASE UPON TAP-OUT TO SECURE AREA.
8. GENERATOR ANNUNCIATOR PANEL. PROVIDE 120-VOLT CONNECTION TO CIRCUIT HR-19.
9. ROUTE TELEPHONE AND DATA TO CONTRACTOR-PROVIDED PATCH PANEL IN CITY SERVER ROOM 229. SEE KEYED NOTE 4 ON SHEET E3.2.
10. PROVIDE (1) CAT 5e CABLE FOR TELEPHONE AND (1) CAT 5e CABLE FOR RADIO REMOTE CONTROL.
11. PROVIDE (3) CAT 5e CABLES FOR RADIO REMOTE CONTROL.
12. ITEM CONNECTED TO TAP-OUT SYSTEM. SEE TAP-OUT CONTROL PANEL SCHEDULE E0.3

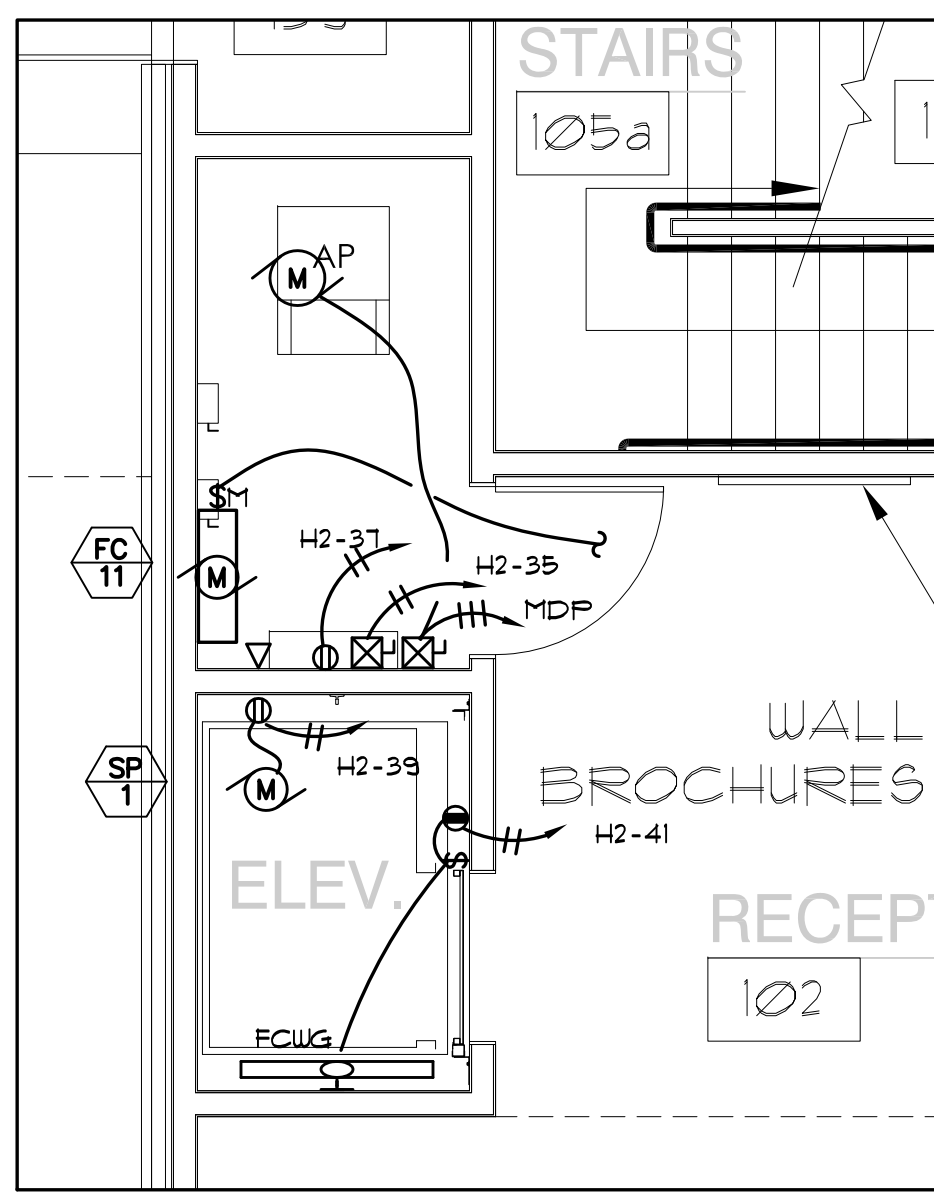


6 VIDEO / DATA DETAIL
E3.1 NTS

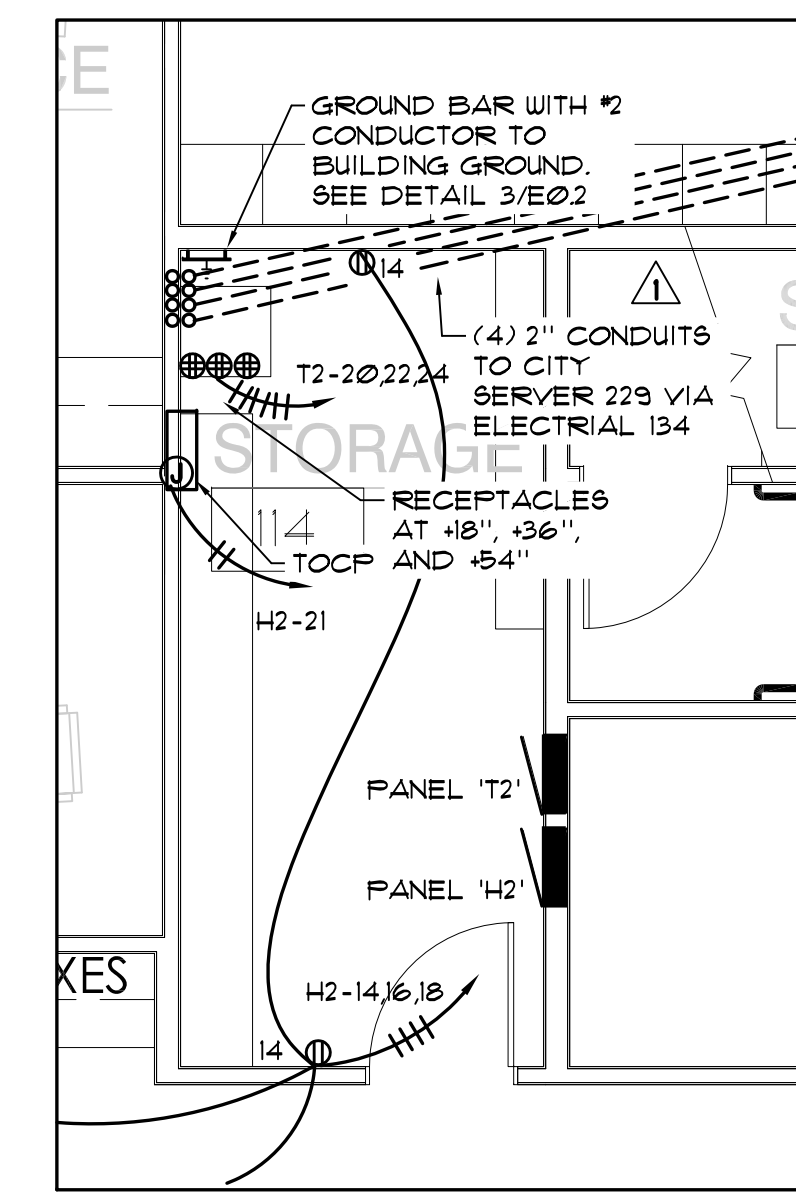


2
E3.1 SCALE: DIAGRAMMATIC

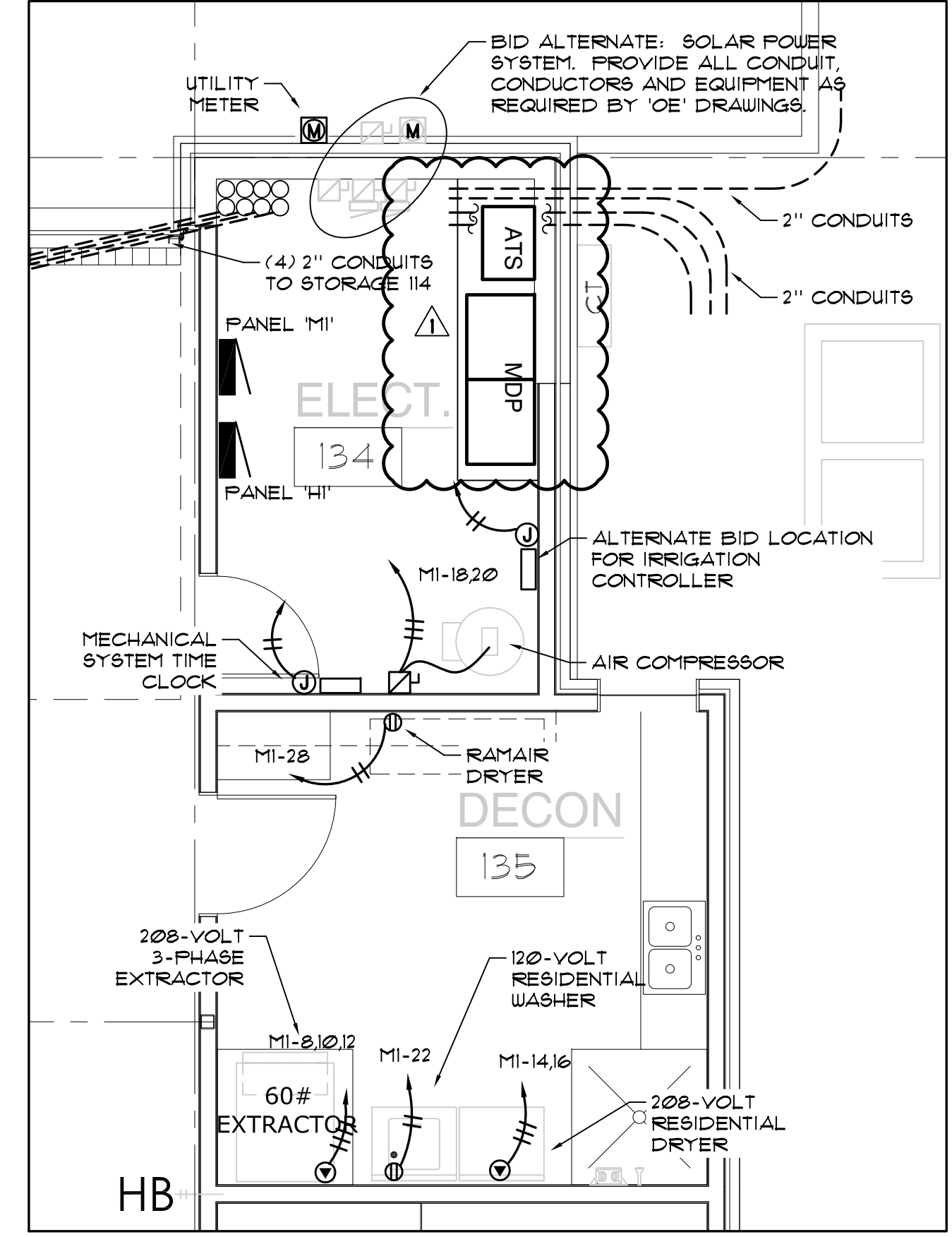
1 ELECTRICAL POWER & SIGNAL PLAN - 1st FLOOR
E3.1 SCALE: 1/8" = 1'-0"



3 ELEVATOR DETAIL
E3.1 SCALE: 1/4" = 1'-0"



4 STORAGE 114 DETAIL
E3.1 SCALE: 1/4" = 1'-0"



5 ELECTRICAL ROOM / DECON DETAIL
E3.1 SCALE: 1/4" = 1'-0"

HCE INC
ARCHITECTS, ENGINEERS, & PLANNERS
SURVEYORS, & PLANNERS
375 Park Avenue/Cooos Bay, Oregon 97420 (541) 269-1166
19 N. W. Fifth Avenue/Portland, Oregon 97209 (503) 222-1687

**CITY OF COOS BAY
COOS BAY FIRE STATION #1
4TH STREET & ELROD
COOS BAY, OREGON**

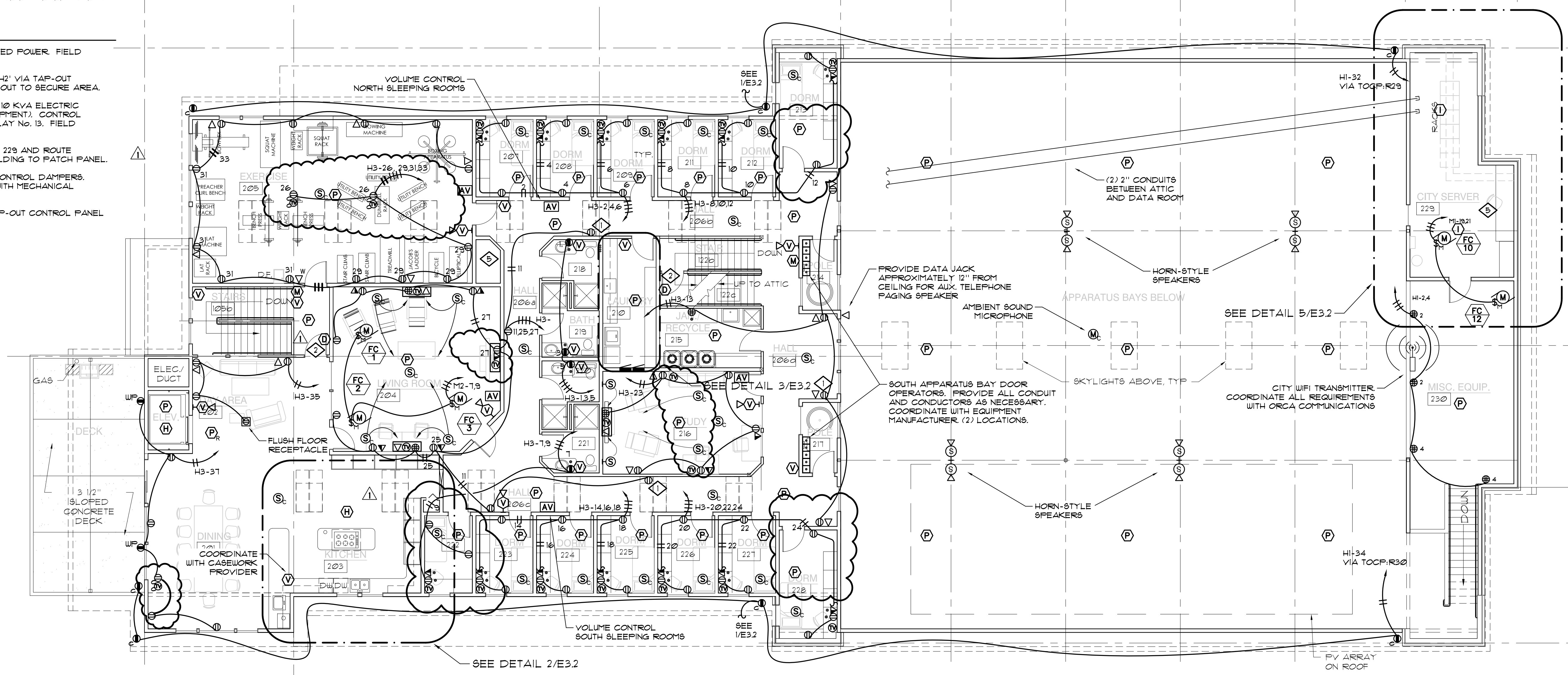
PROJECT:
REGISTERED PROFESSIONAL ENGINEER
OREGON
JULY 13, 2004
GREGORY L. PRINE
EXPIRES 12-31-10
PROJECT NO. 06.10
DATE: JUNE 2009
REVISIONS
DATE BY
6/23/09 GLP
DRAWN BY: GLP
SHEET NO. **E3.1**

KEYED NOTES

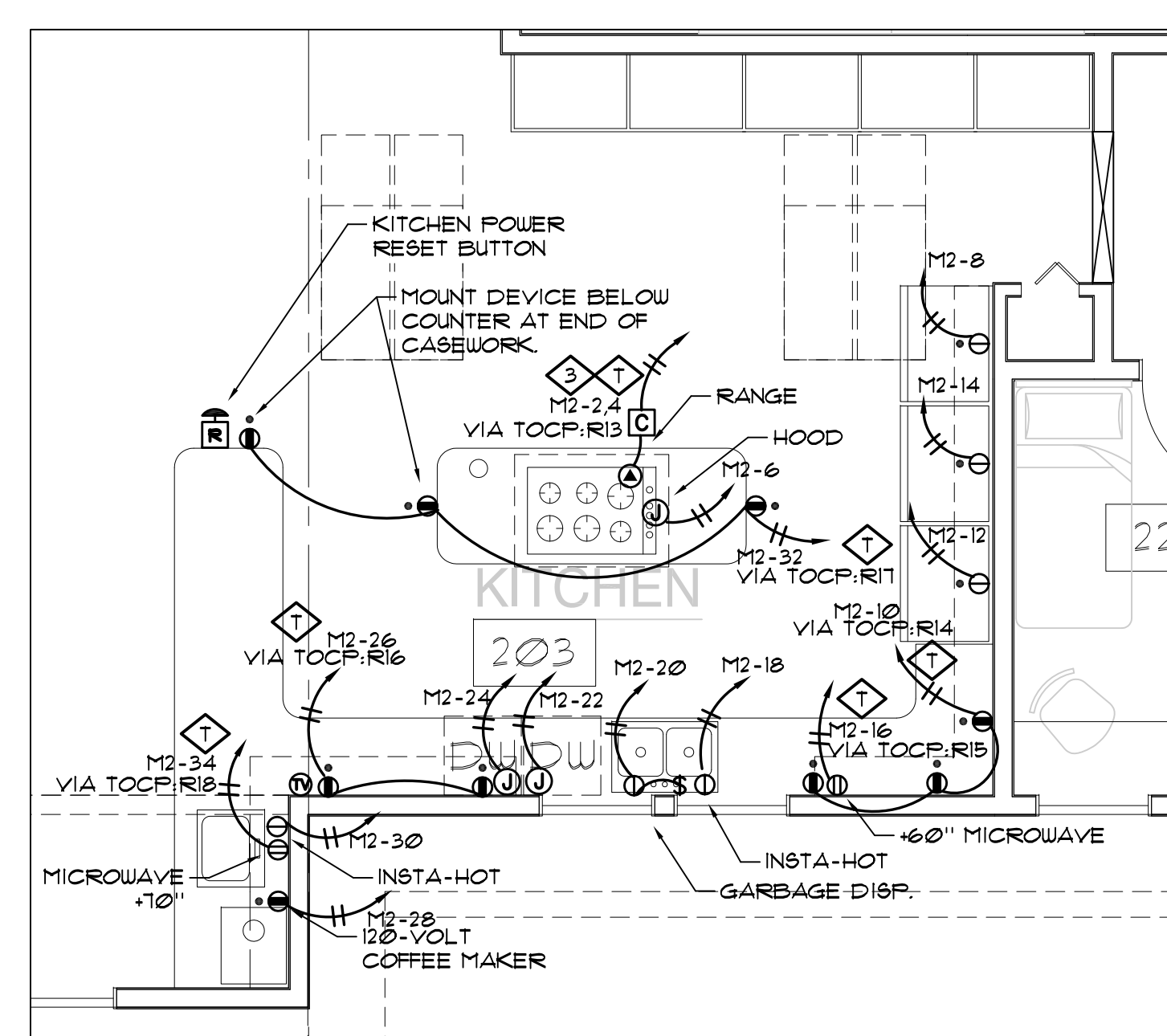
1. ALL TELEPHONE / DATA AND COAX CABLE TO BE ROUTED TO THE DATA RACK IN STORAGE 114 UNLESS NOTED OTHERWISE BY KEYED NOTE 4.

KEYED NOTES

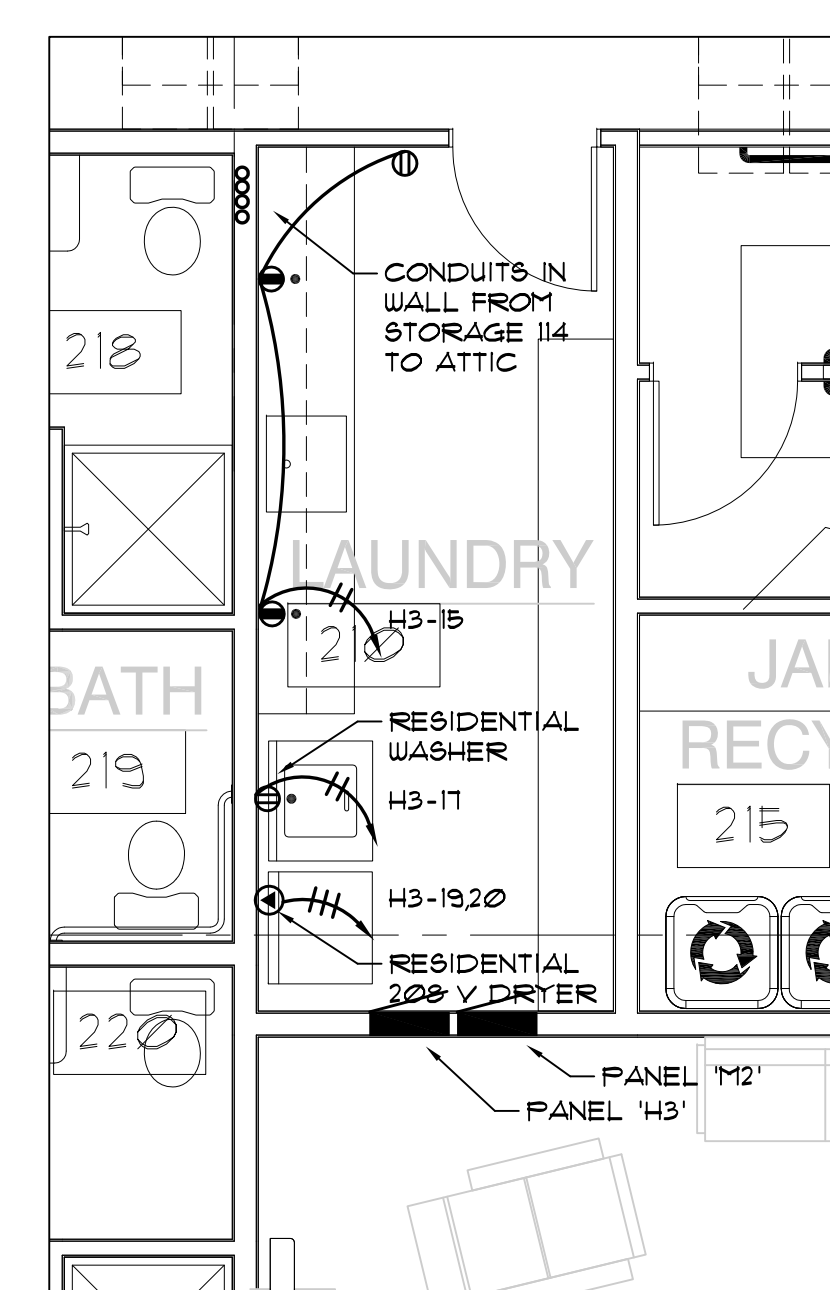
- 1. PROVIDE NOX / CO2 DETECTOR AND ASSOCIATED POWER. FIELD COORDINATE LOCATIONS.
- 2. MAG DOOR HOLD-OPEN. CONNECT TO PANEL 'H2' VIA TAP-OUT CONTROLLER. DOORS TO RELEASE UPON TAP-OUT TO SECURE AREA.
- 3. PROVIDE CONTACTOR SIZED FOR CONTROL OF 10 KVA ELECTRIC RANGE (VERIFY CAPACITY WITH SUPPLIED EQUIPMENT). CONTROL CONTACTOR VIA TAP-OUT CONTROL PANEL RELAY NO. 13. FIELD VERIFY ALL REQUIREMENTS.
- 4. PROVIDE PATCH PANEL IN CITY SERVER ROOM 229 AND ROUTE TELEPHONE AND DATA FROM EAST END OF BUILDING TO PATCH PANEL.
- 5. PROVIDE 120-VOLT POWER FOR MECHANICAL CONTROL DAMPERS. COORDINATE REQUIREMENTS AND LOCATIONS WITH MECHANICAL CONTRACTOR.
- 6. ITEM CONNECTED TO TAP-OUT SYSTEM. SEE TAP-OUT CONTROL PANEL SCHEDULE E03.



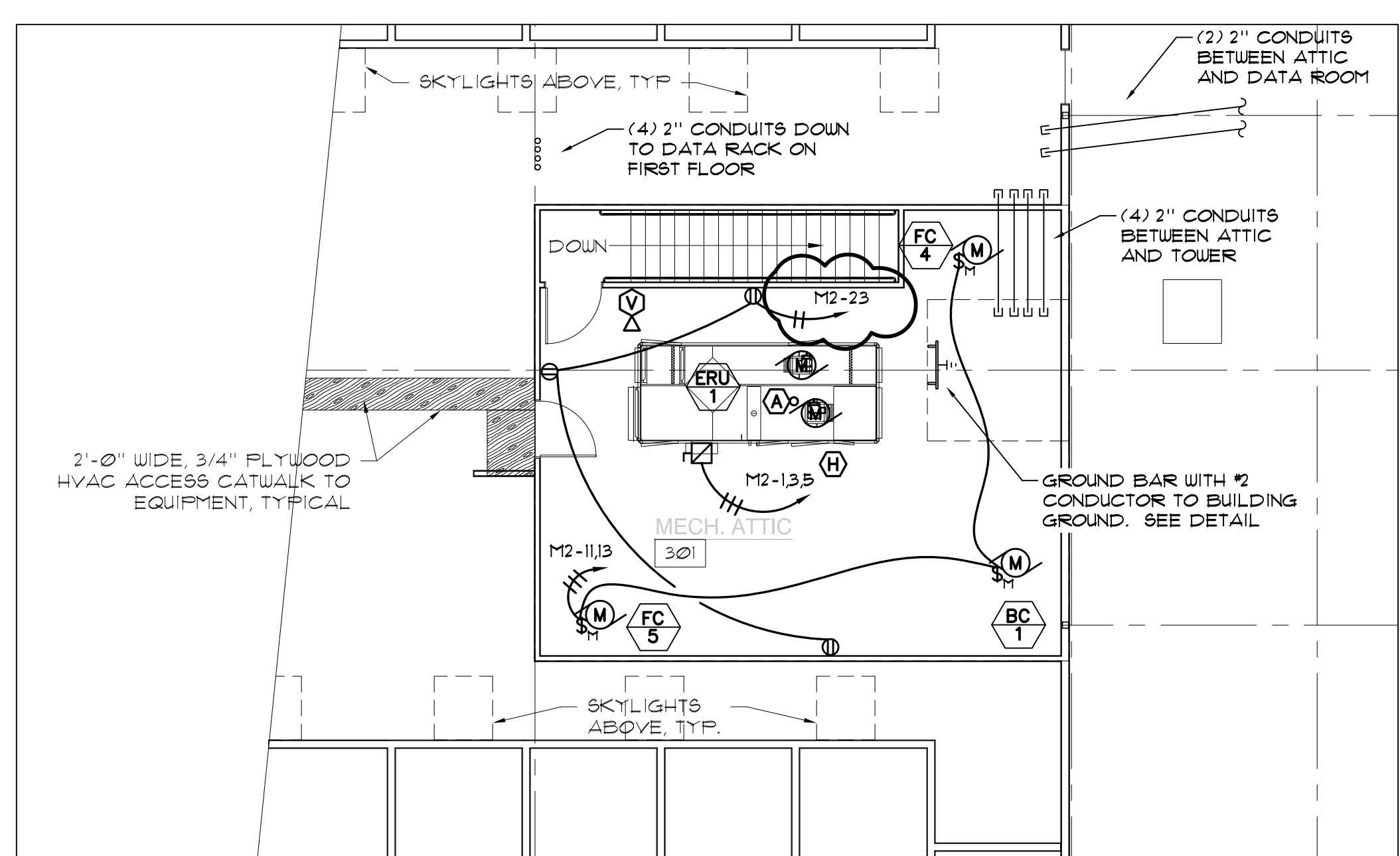
1 ELECTRICAL POWER & SIGNAL PLAN - 2nd FLOOR
E3.2 SCALE: 1/8" = 1'-0"



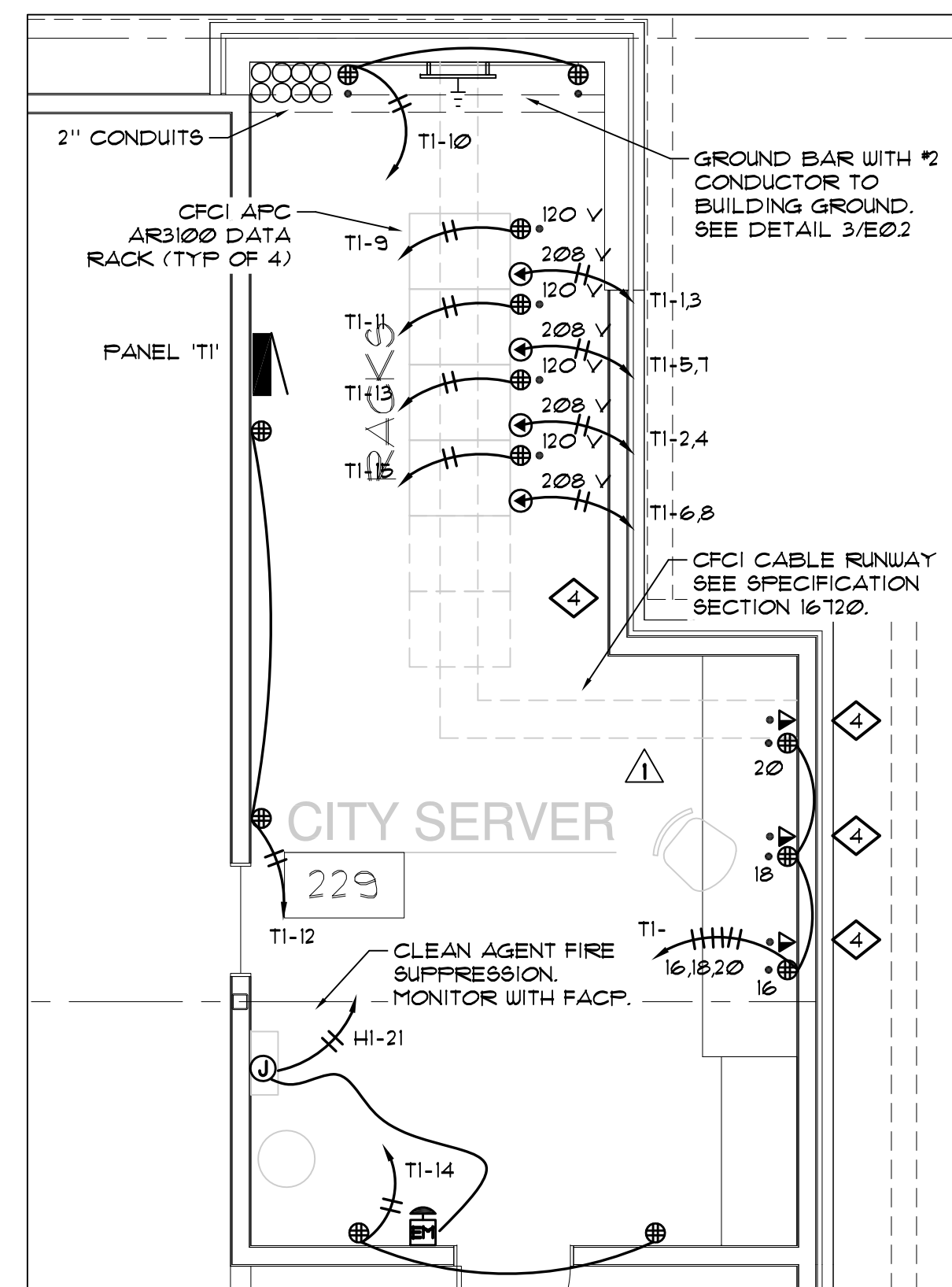
2 KITCHEN DETAIL
E3.2 SCALE: 1/4" = 1'-0"



3 LAUNDRY ROOM DETAIL
E3.2 SCALE: 1/4" = 1'-0"



4 ATTIC DETAIL
E2.2 SCALE: 1/8" = 1'-0"



5 SERVER ROOM DETAIL
E3.2 SCALE: 1/4" = 1'-0"

FILE No. H:\Architecture\Jobs\06.70 Coos Bay Fire Station Building\06.70 Electrical.dwg 03/01/10 10:10 - Tim Iambson

HGE INC
ARCHITECTS, ENGINEERS, SURVEYORS, & PLANNERS
375 Park Avenue/Coos Bay, Oregon 97420 (541) 269-1166
19 N. W. Fifth Avenue/Portland, Oregon 97209 (503) 222-1687

CITY OF COOS BAY
COOS BAY FIRE STATION #1
4TH STREET & ELROD
COOS BAY, OREGON

PROJECT:

REGISTERED PROFESSIONAL ENGINEER 06680	
OREGON JULY 13, 2004 GREGORY L. PRINE	
EXPIRES 12-31-10	
PROJECT NO.	06.70
DATE:	JUNE 2009
REVISIONS	
DATE	BY
6/23/09	GLP
DRAWN BY: GLP	
SHEET NO. E3.2	